

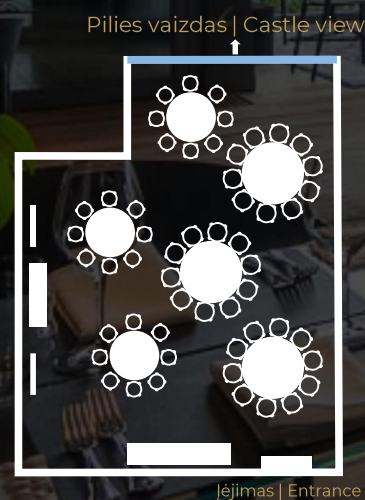
RESTORANAS | RESTAURANT (100 m²)

IŠDĒSTYMAS | SEATING SCENARIOS

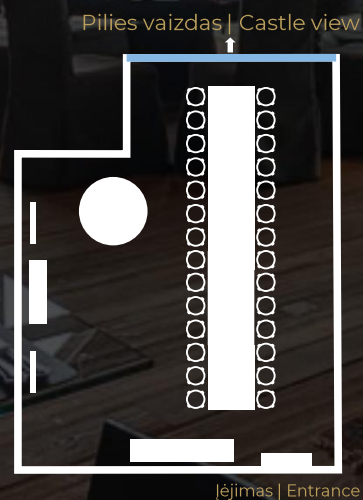
KASDIENIS |
AS IS
30-32 asmenys | persons



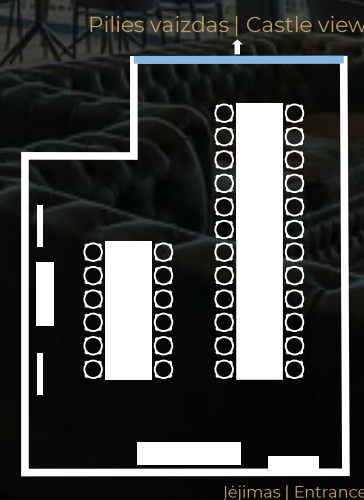
6 APVALŪS STALAI |
6 ROUND TABLES
54 asmenys | persons



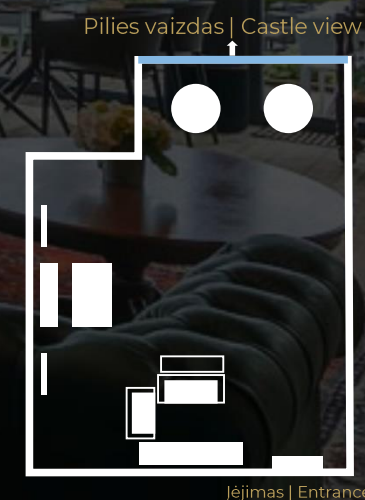
ILGAS STALAS |
LONG TABLE
28 asmenys | persons



DU STALAI |
TWO TABLES
12 ir 24 asmenys | persons



FURŠETAS |
BUFFET
50 asmenų | persons

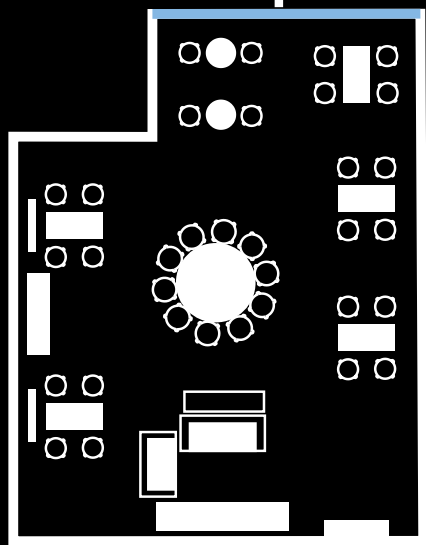


RESTORANAS RESTAURANT (100 m²)

KASDIENIS |
AS IS

30-32 asmenys | persons

Pilnes vaizds | Castle view



Iejimas | Entrance

ASK
ASKLUBAS
RESTAURANT & HOTEL

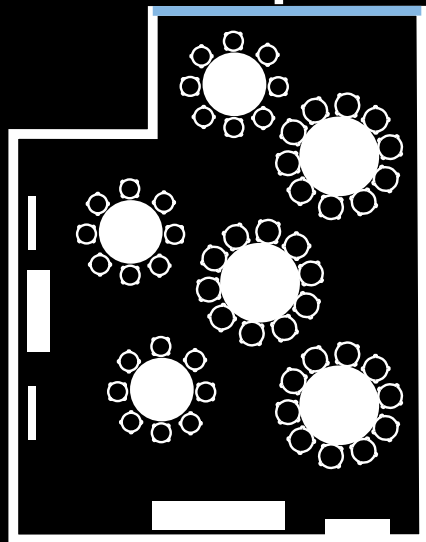


RESTORANAS RESTAURANT (100 m²)

6 APVALŪS STALAI |
6 ROUND TABLES

54 asmenys | persons

Pilnes vaizdas | Castle view



Iejimas | Entrance

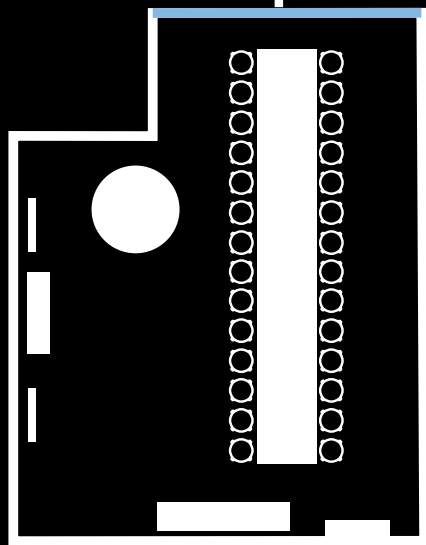


RESTORANAS RESTAURANT (100 m²)

ILGAS STALAS |
LONG TABLE

28 asmenys | persons

Pilnes vaizds | Castle view



Iėjimas | Entrance

